

## HVC530-2 Series connector

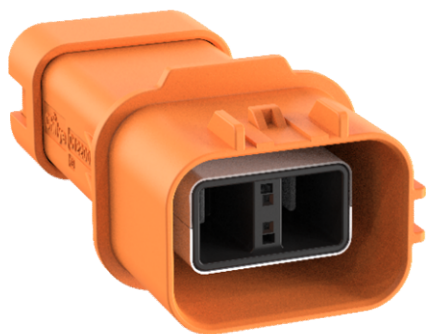
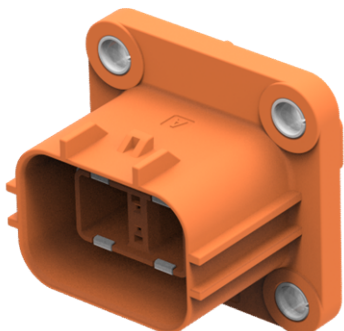
HVC530-2 series connector is a plastic sealing high-voltage connector, which specially developed for the high-voltage connection system in electric and hybrid vehicles. And it with two kinds of connection modes, plug with flange Receptacle and linear Receptacle with plug, connect with 2.5-6mm<sup>2</sup> cable, the current capacity is 15A-45A. It' s a reliable connection solution for auxiliary equipment such as battery pack, DC/DC converter, vehicle charger, electric heating, electric air conditioning, etc.



Revision	Description	Releasing	Approval
REV_A	First Released	2026/2/27	李想

▲ If you want to know more information about this series products, please feel free to contact with us.

SUZHOU CHILYE GREEN TECHNOLOGY CO., LTD.  
Address: No.2 Rui en Lane, Xingpu Road, Suzhou Industrial Park, Jiangsu Province, China  
Tel: 0512-69566052 Fax: 0512-69566055  
Email: evsales@chilye.com



### Applications

Battery pack, DC/DC, Inverters, PTC, Power distribution unit, Air conditioner, High voltage harness assembly system

### Mechanical

Unlock mode: Two stage unlock, no tool required  
Durability:  $\geq 100$  mating cycles  
HVIL type: Integrated internal HVIL  
Connection: Crimped connections  
Cable range: 2.5 to 6mm<sup>2</sup> shielding single core cable

### Electrical

Rated Voltage: 1000Vdc  
Rated Current: 45A Max(85°)  
Insulation Resistance:  $>200M\Omega$   
Withstand voltage: 3000V AC  
Shielding range: 360° shielding

### Environmental

Protection grade: IP67(mated), IP6k9k;  
Electrical protection: IP2XB  
Operating temperature: -40°C to 125°C  
Storage temperature: -40°C to 85°C

### Cables

HV cables: 2.5 to 6mm<sup>2</sup>  
HVIL cables: 0.5mm<sup>2</sup>

### Standards

SAE J1742/J2223  
USCAR-2  
USCAR-37  
LV-215

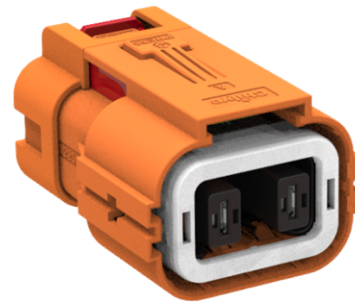
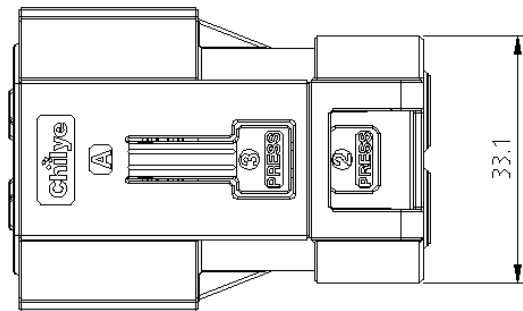
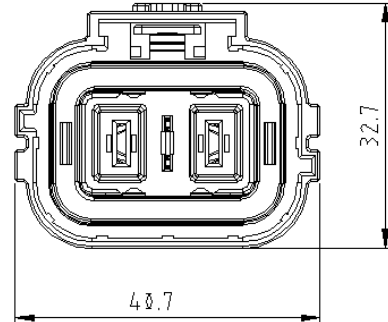
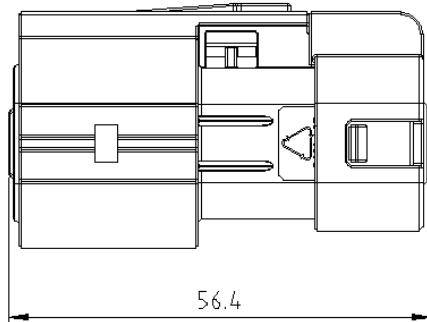
### Product Selection

Product Mode	Two Core			
	2.5mm <sup>2</sup>	2.5mm <sup>2</sup>	4.0mm <sup>2</sup>	6.0mm <sup>2</sup>
Receptacle	CL-HVC530-21X			CL-HVC530-21X-06
Right angle receptacle	CL-HVC530-22X-01	CL-HVC530-22X-02	CL-HVC530-22X-04	CL-HVC530-22X-06
Plug	CL-HVC530-23X-01	CL-HVC530-23X-02	CL-HVC530-23X-04	CL-HVC530-23X-06

PS: 01 (2.5mm<sup>2</sup>: 4.2~4.7mm) ; 02 (2.5mm<sup>2</sup>: 5.1~5.7mm)



### 1. 2P Plug--- Product outline dimensions



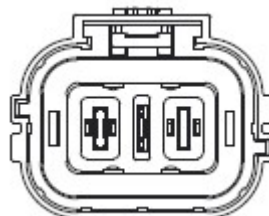
#### ◆ Cables

High Voltage cables ( shielding ) : 2.5-6mm<sup>2</sup> : Cable diameter requirement : 2.5mm<sup>2</sup> : ( 01: 4.2~4.7mm; 02: 5.1~5.7mm ) ;4mm<sup>2</sup>: 5.1mm~ 5.7mm; 6mm<sup>2</sup>: 6.0~ 6.6mm

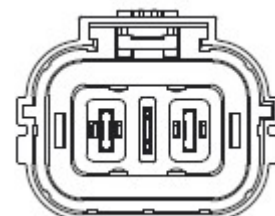
#### ◆ Polarization selection



Coding A  
HVC530- 23A



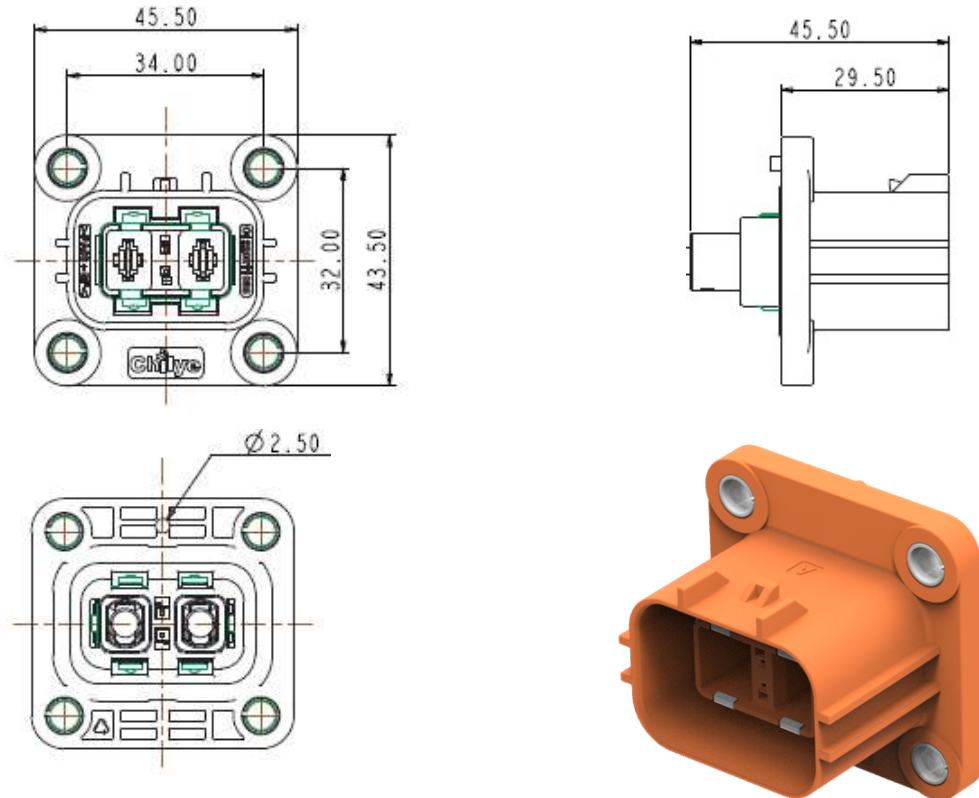
Coding B  
HVC530-23B



Coding C  
HVC530-23C



## 2. 2P Receptacle--- Product outline dimensions

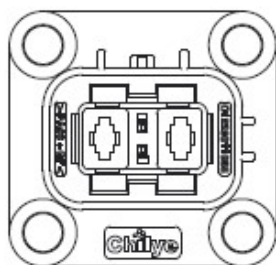


### ◆ Cables

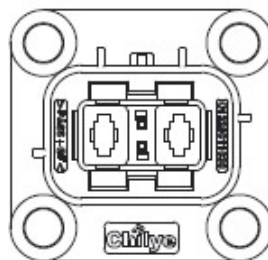
High Voltage cables: Cable diameter requirement : 2.5mm<sup>2</sup>: 2.5mm~ 3.8mm; 4mm<sup>2</sup>: 3.3mm~ 4.6mm, 6mm<sup>2</sup>: 4.9~ 5.3mm

HVIL cables: 0.5mm<sup>2</sup>; Cable diameter requirement : ≤ Φ 1.8mm;

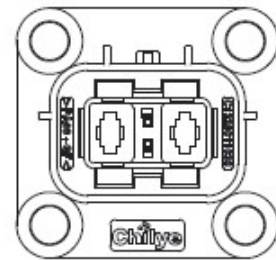
### ◆ Polarization selection



Coding A  
HVC530 -21A



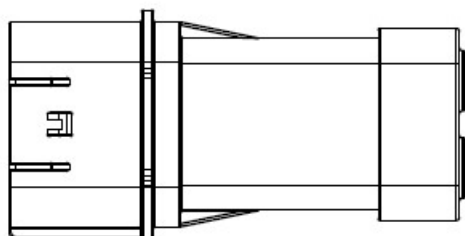
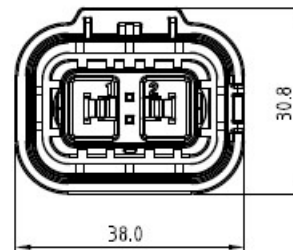
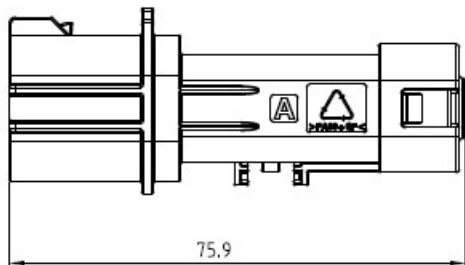
Coding B  
HVC530 -21B



Coding C  
HVC530 -21C



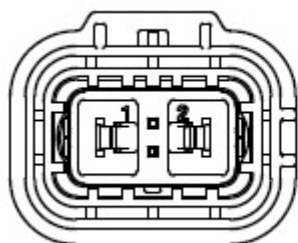
2. 2P Linear Receptacle--- Product outline dimensions



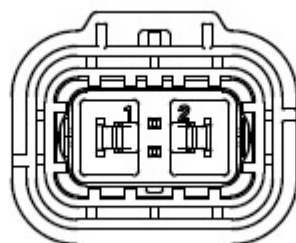
◆ Cables

High Voltage cables (shielding) : 2.5-6mm<sup>2</sup>; Cable diameter requirement : 2.5mm<sup>2</sup> : ( 01: 4.2~4.7mm; 02: 5.1~5.7mm ) ;4mm<sup>2</sup>: 5.1mm~ 5.7mm; 6mm<sup>2</sup>: 6.0~ 6.6mm

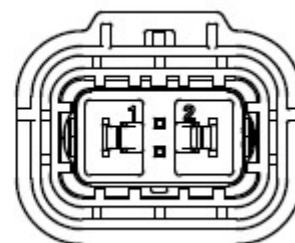
◆ Polarization selection



Coding A  
HVC530-23A



Coding B  
HVC530-23B



Coding C  
HVC530-23C



### 3. 2P Receptacle--- Mounting Interface Dimensions

